

No 11640

LEEDS UNITED
A.F.C.

TOKEN

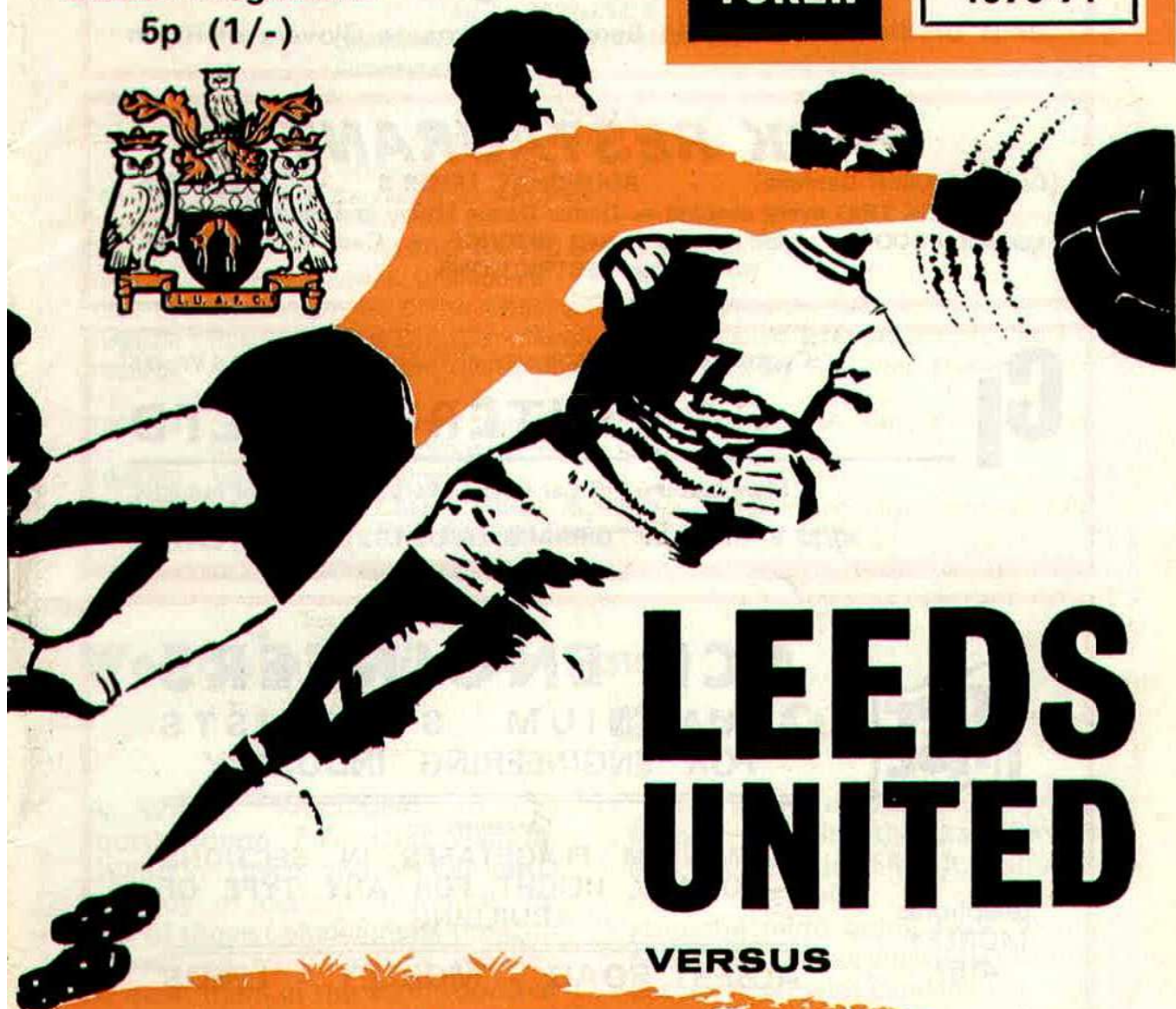
SWINDON
TOWN

28

1970-71

Official Programme

5p (1/-)



LEEDS UNITED

VERSUS

SWINDON TOWN

SATURDAY, 23rd JAN., 1971 K.O. 3 p.m.
F.A. CUP 4th ROUND



NEXT HOME
MATCHES



SATURDAY, 30th JANUARY, 1971 K.O. 3.0 p.m. C.L.

MANCHESTER CITY RESERVES

SATURDAY, 6th FEBRUARY, 1971 K.O. 3.0 p.m. F.L.

LIVERPOOL

For Morris Wolseley MG Austin Triumph Rover Jaguar Daimler

Leyland
Redline
Trucks

Appleyard

GUY
Big "J"
Trucks

Leeds Bradford Huddersfield Barnsley Harrogate Glovers of Ripon

PARK RESTAURANT

(Opposite Canal Gardens) - ROUNDHAY, LEEDS 8 - tel. 661689

PARK TRIO every evening — Dinner Dance Friday and Saturday

Excellent **FOOD** - Friendly and Expert **SERVICE** - Cosy **ATMOSPHERE**

No Parking **RESTRICTIONS**

GI

Contractors to the Ministry of Public Buildings and Works

CAR INTERIORS LTD

Manufacturers of Car Seat Covers to the Motor Industry

30/32 BRUNSWICK TERRACE. LEEDS LS2 8BU tel : 27411/2



ACE ENGINEERS ALUMINIUM STOCKISTS FOR ENGINEERING INDUSTRY

Specialists in:

ALUMINIUM FLAGSTAFFS IN SECTIONS
— TO ANY HEIGHT FOR ANY TYPE OF
BUILDING

telephone
MORLEY
4157

ALBERT ROAD - MORLEY - LEEDS

IN AND AROUND LEEDS LOOK NO FURTHER THAN ONE OF

GILPIN'S PLACES

THE MANSION HOTEL

Bars, Restaurant and Banqueting in
Elegance

ROUNDHAY PARK

THE GUILDFORD HOTEL

The new Merry Boys Bar
Banqueting — Popular Lunches

THE HEADROW

THE KING CHARLES

One of the finest Pubs in the City
Centre — Lunch from 6/-

LANDS LANE

THE FOX AND GRAPES

The trend-setter in decor
Bar, Meals Monday — Friday

LEEDS-TADCASTER RD., BARWICK

LEEDS UNITED

ASSOCIATION FOOTBALL CLUB LIMITED

Registered Office & Ground ELLAND ROAD tel. 76037/8 grams: "Football, Leeds"

President The Right Hon. THE EARL OF HAREWOOD

Vice-Presidents JOHN H. BROMLEY
S. L. BLENKINSOP
H. L. REYNOLDS

Chairman Ald. P. A. WOODWARD

Directors S. BOLTON
M. CUSSINS
R. R. ROBERTS
S. G. SIMON

Team Manager D. REVIE

General Manager & Secretary K. ARCHER

LEEDS UNITED'S ACHIEVEMENTS

- 1963/64 Second Division Champions.
1964/65 Runners-Up 1st Division Championship. Runners-Up F.A. Cup Final.
1965/66 Runners-Up 1st Div. Championship. Semi-Finalists Inter Cities Fairs Cup.
1966/67 Fourth 1st Division Championship. Semi-Finalists F.A. Cup. Finalists Inter Cities Fairs Cup.
1967/68 Fourth 1st Division Championship. Semi-Finalists F.A. Cup. Winners Inter Cities Fairs Cup. Winners Football League Cup.
1968/69 1st Division Champions.
1969/70 Winners F.A. Charity Shield. Runners-Up 1st Division Championship. F.A. Cup Finalists. Semi-Finalists European Champions Cup.
-

Welcome Swindon Town

Great Cup Fighters

A WARM WELCOME to our fourth round F.A. Cup visitors, Swindon Town, the soccer pride and joy of distant Wiltshire. By one of those coincidences the Cup throws up so frequently we had to meet them in the sixth round at Swindon only last season, and they gave us a real run for our 2—0 victory.

Allan Clarke snapped both our goals in the first half, and if he can repeat the performance today it will be most welcome against this great cup fighting side from the Second Division.

It is only two years ago, we would remind you, that as a Third Division side (although within weeks of promotion) they beat Arsenal 3—1 at Wembley in the Football League Cup Final to rock all soccer.

This being a Cup Saturday and Monday bringing the draw for the fifth round it is difficult, although rather harrowing, we admit, to stop the mind going back to our positively extraordinary run to that double Final with Chelsea last season. We even started (as national favourites with the bookmakers) almost weirdly by having a very hard struggle to beat Swansea City, a Fourth Division club, by only 2—1 on our own ground. It will be a long time before we forget how bravely Swansea fought.

Next we were drawn away to the West London amateur club, Sutton United, members of the Athenian League and a rare plucky side with a splendidly vigorous committee. They had a lot to do to make their ground suit

the importance and attraction of our visit, but they managed nobly. We hadn't any trouble in winning 6—0, but there was a sequel.

Our Manager, Mr. Don Revie, was very struck by the form shown, even in heavy defeat, by John Faulkner, Sutton's centre half, and John soon turned professional with us. Last summer he made a very plucky recovery from a fractured knee suffered while playing against Manchester City in our last home League game on 18th April. It was only his second League game, poor chap, but he met his misfortune with splendid cheerfulness, and has made a complete recovery.

After the Sutton match, a curiosity of its kind with an amateur club in the fourth round we were at home to Mansfield Town, and beat them 2—0.

The sixth round sent us to Swindon, who were "holy terrors" at home, and had been for two seasons since they came up from the Third Division into the Second with Watford after the 1968-69 season. That season only Watford beat them at Swindon in their compact little ground and when we went there the following season they had not been beaten there that season.

Furthermore their manager, Freddie Ford, who was in his first season with them, had the remarkable record of never having lost a home Cup-tie on his previous 10 years with Bristol City and Bristol Rovers, let alone two ties with Swindon.

However, we still won 2—0, and so went into the semi-finals. Now the "fun" really began.

We were drawn against Manchester United and played them three times—at Hillsborough, at Villa Park and at Burnden Park, where we won 1—0 after two gruelling 0—0's.

And so to Wembley against Chelsea for the first Final, drawn 2—2 but "won" by us on all other points. Then to Old Trafford where Chelsea won 2—1 against, we still claim, the run of the play.

Yes, it was an almost upside down Cup run that we had last season, unforgettable in many a moment, starting with the shock that Swansea gave us here in the third round.

We wonder what lies ahead this season, on that Wembley trail, making the proviso, of course, that we are still on it tonight. Every season teaches that all sorts can happen in the Cup.

As our gallant neighbours from Rotherham smartly reminded us here on Monday night by taking us to 3—2 following 0—0 at Rotherham in only the third round.

OUR SIXTH ROUND LAST SEASON AT SWINDON

Our last meeting with Swindon Town was less than 12 months ago in the sixth round of the F.A. Cup at Swindon on Saturday, 21st February, last year. Leeds United won 0—2 and passed on into the semi-finals with Chelsea, Watford and Manchester United (after they had won a home re-play with Middlesbrough). The defeated clubs were, in addition to Swindon and Middlesbrough, Q.P.R. and Liverpool.

Details of our win at Swindon—

Swindon Town 0

Leeds United (2) 2

Scorers for **Leeds United**—Clarke (2). (25 and 28 minutes).

Attendance—27,500 (capacity).

Receipts—£10,000 (record).

Teams: **Swindon Town** — Downsborough, Thomas, Trollope, Butler, Burrows, Harland, Smith, Smart, Horsfield, Noble, Rogers. Substitute: Jones (C.).

Leeds United — Sprake, Reaney, Cooper, Bremner, Charlton, Hunter, Madeley, Clarke, Jones, Giles, Gray. Substitute: Lorimer.

Referee: Mr. K. E. Walker, Maidstone, Kent.



ROSE FORGROVE LIMITED

Coal Road, Seacroft, Leeds, LS14 2AN Tel. 648177

World leaders in the manufacture of automatic wrapping and packaging machinery, have a number of vacancies for fully skilled engineering machinists at their recently opened new factory.

Apply to the Personnel Dept.

Our Visitors . . .

PETER DOWNSBOROUGH (Goalkeeper). Born Halifax. Signed in August 1965 from Halifax Town where he was a product of local football. A fearless agile player who has done much to strengthen the Town's defence. Regular member of promotion winning side of Season 1968/69. Played in Football League Cup Final winning team of Season 1968/69. Played in League Cup Winners Cup winning team of 1969. Played in Anglo Italian Inter-Club Competition winning team Season 1969/70. Height 5' 10½". Weight 13st. 2lb.

ROD THOMAS (Full Back). Born Glyncorrwg. A former youth player with the Club. He was signed from Gloucester City in July 1964. Has gained Welsh Under 23 Caps and Full Welsh Caps. Regular member of promotion winning side of Season 1968/69. Played in Football League Cup Final winning team of Season 1968/69. Played in League Cup Winners Cup winning team of 1969 and played in Anglo Italian Inter-Club Competition winning team Season 1969/70. Height 6'. Weight 12st. 10lb.

JOE BUTLER (Full Back). Born Newcastle. Joined Swindon from Newcastle United in August 1965 where he graduated to the senior ranks through the Club's Junior Team. A tenacious player whose speed and ability amply make up for his lack of inches. Regular member of promotion winning side of Season 1968/69. Played in Football League Cup Final winning team of Season 1968/69. Played in League Cup Winners Cup winning team of 1969, and played in Anglo Italian Inter-Club Competition winning team Season 1969/70. Height 5' 7½". Weight 11st.

STAN HARLAND (Left Half and Captain). Born Liverpool. Was signed from Carlisle United in July 1966. Formerly with Everton and Bradford City. He has been a regular choice at left half since making his debut at the beginning of the 1966/67 season. A forceful player who likes to go forward to back up the forwards in attack. Regular member of promotion winning side of Season 1968/69. Played in Football League Cup Final Winning Team of Season 1968/69. Played in League Cup Winners Cup winning team of 1969 and played in Anglo Italian Inter-Club Competition winning team Season 1969/70. Height 6'. Weight 12st. 5lb.

TONY GOUGH (Half Back). Born Bath. Signed for Bristol Rovers from Bath City at age of 17 and subsequently returned to Bath. Signed from Bath City July 1970 to return to League Football. Height 5' 5". Weight 10st. 10lb.

CHRIS PORTER (Outside Left). Born Bridgewater. Signed from Bridgewater 1969. Height 5' 10½". Weight 11st. 8lb.

FRANK BURROWS (Centre Half). Born Larkhall, Scotland. Joined the Club from Scunthorpe United for whom he played three seasons. Formerly with Raith Rovers. A strong defender who has made his mark in the first team. Regular member of promotion winning side of Season 1968/69. Played in Football League Cup Final winning team of Season 1968/69. Played in League Cup Winners Cup winning team of 1969, and played in Anglo Italian Inter-Club Competition winning team Season 1969/70. Height 6' 1". Weight 12st. 8lb.

JOHN TROLLOPE (Left Back). Born Swindon. A local player who joined the Swindon Ground Staff from school. He was selected for the first team at the beginning of the 1960/61 season when he was just 16 years old, and was ever present during that season. Together with his partner that year, who was also 16, they were the youngest full backs ever to appear as a pair in League Football. Regular member of promotion winning side of Season 1968/69. Played in Football League Cup Final winning team of Season 1968/69. Played in League Cup Winners Cup winning team of 1969 and played in Anglo Italian Inter-Club Competition winning team Season 1969/70. Height 5' 10". Weight 11st. 13lb.

DON ROGERS (Outside Right or Left). Born Paulton. He was signed by Swindon when only 15 and quickly came to the fore. Gained many England Youth International Caps and subsequently played in the England Under 23 International Team. Regular member of promotion winning side of Season 1968/69. Played in Football League Cup Final winning team of Season 1968/69. Played in League Cup Winners Cup winning team of 1969, and played in Anglo Italian Inter-Club Competition winning team season 1969/70. Height 5' 10". Weight 12st. 10lb.

PETER NOBLE (Inside Forward). Born Sunderland. Joined the Club from Newcastle in January 1968 for whom he played for four years. Prefers to play an attacking role. Regular member of promotion winning side of Season 1968/69. Played in Football League Cup Final winning team of Season 1968/69. Played in League Cup Winners Cup winning team of 1969, and played in Anglo Italian Inter-Club Competition winning team Season 1969/70. Height 5' 8". Weight 10st. 10lb.

ARTHUR HORSFIELD (Inside Forward). Born Newcastle. A close season signing from Newcastle United. Previously played for Middlesbrough whom he joined as a Youth International. Top goal scorer last season. Played in League Cup Winners Cup winning team of 1969 and played in Anglo Italian Inter-Club Competition winning team Season 1969/70. Height 5' 11". Weight 12st. 1lb.

WALLACE ARNOLD

SALES AND SERVICE LTD.
HUNSLET ROAD, LEEDS 10

FIRST for VAUXHALL



PHONE 39911

for personal and commercial stationery

Jowett and Sowry Limited

INSPECT OUR EXCELLENT RANGE OF
PARKER PENS AND KERN DRAWING INSTRUMENTS

ALBION STREET - LEEDS 1

Telephone 21197- 20341



6 LANDS LANE - LEEDS 1
TELEPHONE 36666

BRADY BROS.

(Roofing) LTD.

54 BROWN LANE - LEEDS
LS11 9DJ

Telephone 27543/24691

Roof Tiling, Repairs & Maintenance
Built-Up Felt Roofing, Etc.

Our Visitors—continued . . .

JOHN SMITH (Inside Forward). Born London. Signed from Torquay United in June 1968 and previously played for Leyton Orient, West Ham United, Tottenham Hotspur and Coventry. Former England Under 23 International. Regular member of promotion winning side of Season 1968/69. Played in Football League Cup Final winning team of Season 1968/69. Played in League Cup Winners Cup winning team of 1969, and played in Anglo Italian Inter-Club Competition winning team Season 1969/70. Height 5' 8". Weight 13st.

KEITH ALLEN (Right Back). Born Cheltenham. Apprentice Professional signed Professional 1970. Height 5' 6". Weight 10st. 12lb.

DAVID DOWN (Centre Forward). Born Bridgewater. Signed from Bridgewater 1969. Height 5' 10½". Weight 11st. 8lb.

FREDDIE FORD — TEAM MANAGER

Player — 1935/46 Charlton
1946/48 Millwall
1948/50 Carlisle

Injury finished playing career.

1950/53 Trainer Coach with Carlisle together with Bill Shankly who was Manager of that Club.

1954/60 Bristol Rovers — Coach.

1960/67 Bristol City — Manager. Club gained promotion from Third to Second Division during this period.

1967/68 Swindon — Coach.

1968/69 Bristol Rovers — Manager.

1969 Swindon — Team Manager.

Whilst with Bristol Rovers was Trainer of England "B" and Under 23 teams and for F.A. teams.

MAURICE OWEN — TRAINER

Joined Swindon during the 1946/47 season. Retired after winning promotion in 1962/63 season. Played over 600 First Team games. Selected for England "B" Team in 1952/53.

ACCOUNTING MACHINES

NATIONAL, BURROUGHS, SUNDSTRAND, OHDNER, ADDO, ETC. Re-built accounting machines at half price. Unconditional guarantee. Free decimalisation.

H.P.-LEASE. Short or long term hire.

DECIMALISATION. We offer a guaranteed decimalisation conversion service on leading makes of accounting, adding, calculators, etc.

For further information contact us direct at the address below:

Accounting & Business M/c Co.
98 Oldfield Lane, Leeds, LS12 4BR
Tel. Leeds 639095

IF IT'S BARRELS AND DRUMS — THEN IT'S

E PEASE & SON LTD

Ravell Cooprage

Gelderd Road, Leeds, LS12 6DL

Tel. 638573

All Types Supplied & Reconditioned
SHRUB TUBS TO SPECIFIED
REQUIREMENTS

**WHILE YOU'RE WATCHING
THE GAME
YOUR CAR
IS BEING EATEN
AWAY BY RUST**

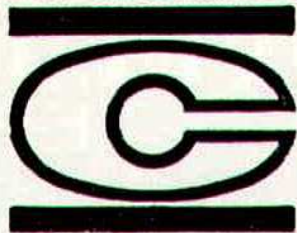
Protect your new or 'newish' car with the guaranteed Ziebart method. For further information ring MORLEY 4583 today. It'll mean a more trade-in-able car tomorrow.

ZIEBART

GREAT BRITAIN LIMITED



CONSULT THE MAIN DEALERS



COX and CO

(LEEDS) LTD.

REGENT ST. LEEDS 2. TEL.31914

FOR HUMBER - HILLMAN - SUNBEAM - COMMER KARRIER COMMERCIAL VEHICLES - WE ARE ALSO RETAIL DEALERS FOR DODGE

**FOOTBALL LEAGUE
FIRST DIVISION**

| | P | W | D | L | Pts |
|-----------------|----|----|----|----|-----|
| Leeds United | 26 | 17 | 7 | 2 | 41 |
| Arsenal | 25 | 16 | 6 | 3 | 38 |
| Manchester C. | 25 | 11 | 9 | 5 | 31 |
| Tottenham | 24 | 11 | 8 | 5 | 30 |
| Chelsea | 25 | 10 | 10 | 5 | 30 |
| Wolves | 25 | 12 | 6 | 7 | 30 |
| Southampton | 25 | 11 | 7 | 7 | 30 |
| Liverpool | 25 | 8 | 12 | 5 | 28 |
| Crystal Palace | 25 | 9 | 9 | 7 | 27 |
| Stoke City | 26 | 8 | 10 | 8 | 26 |
| Coventry City | 25 | 10 | 6 | 9 | 26 |
| Everton | 25 | 8 | 8 | 9 | 24 |
| Newcastle U. | 25 | 9 | 6 | 10 | 24 |
| Manchester U. | 25 | 6 | 10 | 9 | 22 |
| Huddersfield T. | 25 | 6 | 10 | 9 | 22 |
| Derby County | 25 | 7 | 7 | 11 | 21 |
| West Brom. | 25 | 6 | 9 | 10 | 21 |
| Ipswich Town | 24 | 7 | 5 | 12 | 19 |
| Notts. Forest | 24 | 5 | 7 | 12 | 17 |
| West Ham | 24 | 3 | 9 | 12 | 15 |
| Blackpool | 25 | 3 | 8 | 14 | 14 |
| Burnley | 25 | 2 | 9 | 14 | 13 |

**FOOTBALL LEAGUE
SECOND DIVISION**

| | P | W | D | L | Pts |
|----------------|----|----|----|----|-----|
| Hull City | 25 | 14 | 6 | 5 | 34 |
| Luton Town | 24 | 12 | 8 | 4 | 32 |
| Cardiff City | 25 | 12 | 8 | 5 | 32 |
| Leicester City | 25 | 13 | 6 | 6 | 32 |
| Sheffield U. | 25 | 11 | 9 | 5 | 31 |
| Middlesbrough | 25 | 12 | 6 | 7 | 30 |
| Carlisle U. | 25 | 9 | 10 | 6 | 28 |
| Norwich | 24 | 9 | 10 | 5 | 28 |
| Swindon Town | 25 | 10 | 7 | 8 | 27 |
| Sunderland | 25 | 10 | 6 | 9 | 26 |
| Oxford United | 24 | 10 | 6 | 8 | 26 |
| Millwall | 24 | 10 | 5 | 9 | 25 |
| Sheffield W. | 26 | 9 | 7 | 10 | 25 |
| Birmingham | 25 | 9 | 6 | 10 | 24 |
| Q.P.R. | 24 | 7 | 7 | 10 | 21 |
| Portsmouth | 24 | 7 | 6 | 11 | 20 |
| Bolton W. | 26 | 7 | 5 | 14 | 19 |
| Leyton Orient | 24 | 4 | 11 | 9 | 19 |
| Watford | 24 | 4 | 9 | 11 | 17 |
| Bristol City | 24 | 5 | 6 | 13 | 16 |
| Blackburn R. | 25 | 4 | 8 | 13 | 16 |
| Charlton | 24 | 3 | 8 | 13 | 14 |

**CENTRAL LEAGUE
Table as at 20th January, 1971**

| | P | W | D | L | Pts |
|-----------------|----|----|----|----|-----|
| Liverpool | 27 | 19 | 4 | 4 | 42 |
| Everton | 27 | 14 | 10 | 3 | 38 |
| Derby County | 26 | 13 | 10 | 3 | 36 |
| Coventry City | 27 | 9 | 10 | 8 | 28 |
| Wolves | 26 | 10 | 8 | 8 | 28 |
| Manchester U. | 24 | 11 | 5 | 8 | 27 |
| Sheffield U. | 26 | 10 | 7 | 9 | 27 |
| Bolton W. | 24 | 11 | 5 | 8 | 27 |
| Newcastle U. | 26 | 8 | 11 | 7 | 27 |
| West Brom. | 25 | 9 | 9 | 7 | 27 |
| Bury | 25 | 10 | 6 | 9 | 26 |
| Blackpool | 26 | 9 | 7 | 10 | 25 |
| Burnley | 23 | 8 | 9 | 6 | 25 |
| Huddersfield T. | 24 | 9 | 6 | 9 | 24 |
| Notts. Forest | 25 | 6 | 10 | 9 | 22 |
| Preston N.E. | 25 | 9 | 4 | 12 | 22 |
| Leeds United | 23 | 6 | 9 | 8 | 21 |
| Sheffield W. | 26 | 7 | 6 | 13 | 20 |
| Blackburn R. | 26 | 8 | 3 | 15 | 19 |
| Manchester C. | 23 | 7 | 3 | 13 | 17 |
| Stoke City | 23 | 7 | 3 | 13 | 17 |
| Aston Villa | 26 | 2 | 7 | 17 | 11 |

Winning Programme Numbers—Monday, 18th January, 1971

£50—26345
£5—07043

£25—05585
£5—26365

£10—26082
£5—29768

Winning Programmes in respect of matches played on a Saturday must be claimed by 5.0 p.m. the following Monday. Matches played on a Wednesday claimed by 5.0 p.m. on Thursday.

MATCH BY MATCH TICKET SALES

We do have a LIMITED number of seats for sale on a match by match basis. Bookings are entertained two weeks before the game from Main Ticket Office in West Stand Car Park. "If there are any tickets still available on the day of the match the selling point will be transferred to the New Office adjacent to the Football Pool Office in Elland Road at the entrance to the car park."

IF IT'S READY TO WEAR IT'S AT
**CASHDISIA
STORES**

Telephones: 23081 - 23265 - 38371
(Extra large sizes in stock)

WE ARE FAMOUS FOR—

MEN'S, YOUTHS' AND BOYS' CLOTHING
AND OUTFITTING - LADIES' AND MEN'S
OVERALLS FOR ALL TRADES AND PRO-
FESSIONS - GIRLS' AND BOYS' SCHOOL
WEAR - LADYBIRD CHILDREN'S WEAR

All at Value for Money Prices

— Your Satisfaction Guaranteed —

Step up with

**JOHNSTONE'S PAINTS
LTD**

12 CROYDON STREET
DOMESTIC STREET - LEEDS 11

Telephone: Leeds 24402

From housing schemes . . .
to nuclear power stations
From hospitals and shops . . .
to automated industrial plants

COMPETENCE is the keynote

N. G. BAILEY & CO. LTD.
ELECTRICAL CONTRACTING ENGINEERS
Head Office: "Heathcote," Ilkley, Yorks.
Tel.: Ilkley 2121
Branches at: Birmingham, Leeds, London,
Manchester, Sheffield; and
Baileys (Scotland) Ltd., Dundee

When THEY are playing AWAY

or for that urgent business appointment
in the U.K. or Europe

Ring NORTHAIR (Air Taxi) Ltd
LEEDS/BRADFORD AIRPORT



Rawdon 2251
who will
arrange the flight
to suit your
schedule

ALWAYS A WINNER GRIMSTON'S



NEW CONCRETE GARAGES!!
offers IMPROVED QUALITY
and EXTRA STRENGTH
at NO EXTRA COST
ALL ERECTED FREE

Visit the Elland Road Showground (junction of
Lane End Place). One mile towards Leeds from
football ground and view at your leisure the new
Grimston range, or phone Leeds 38477 or
Queensbury 2644 for free leaflet.

ILLINGWORTH INGHAM & CO LTD

FOR
TIMBER
JOINERY
WINDOWS
DOORS
HARDWOODS

50 BLACK BULL STREET
LEEDS 10 tel. 20346/9
tel. 35794 (Joinery)

DUNLOP & RANK

LEEDS & LONDON

STEEL

FROM

STOCK

LEEDS
Whitehall Road
Leeds, 12.
Telephone:
636363 (25 lines)
Telex 55142

LEEDS UNITED

WHITE SHIRTS
WHITE SHORTS

1. SPRAKE, Gary
2. REANEY, Paul
3. COOPER, Terry
4. BREMNER, Billy
5. CHARLTON, Jack
6. HUNTER, Norman
7. LORIMER, Peter
8. CLARKE, Allan
9. JONES, Mick
10. GILES, Johnny
11. MADELEY, Paul

Sub.....

Referee :

Mr. N. C. H.
BURTENSHAW
Great Yarmouth, Norfolk



Linesmen :

Mr. G. T. CARTMAN
Stoke-on-Trent
(Red Flag)

Mr. S. SWAIN
Runcorn, Cheshire
(Yellow Flag)

Any alteration to these teams will
be announced over the loudspeakers



- COLOUR PRINTERS
- GENERAL COMMERCIAL and SPORTING PRINTERS
- BROCHURE and PROGRAMME SPECIALISTS
- WEDDING and PERSONAL STATIONERY
- 10 AT VIEW BETTING TICKETS

L. M. LEE (Printers) LTD.
105-105A NORTH STREET LEEDS LS7 1DE
telephone 20661-2

FOR ALL
REQUIREM

THE WE
192-194

Barnsley T
Dewsbury
York Tel. 5
Wakefield
Cleckheaton

& RANKEN LTD
S & LONDON
STEEL
FROM
STOCK

LONDON
 Wood Lane W.12.
 Telephone:
 Shepherds Bush
 0694 (5 lines)

600
 CLUB

CAR RADIO of Quality
 it's always
Audion
 (LEEDS) LTD.
 184 ROUNDHAY ROAD - LEEDS 8
 Telephone 623903
 49 PONTEFRACT ROAD - STOURTON
 LEEDS 10 telephone 77880
 Have your new car radio fitted
 whilst watching the match—free
 transport to and from the ground!

Referee :
Mr. N. C. H.
BURTENSHAW
 Great Yarmouth, Norfolk

SWINDON TOWN

RED SHIRTS
 WHITE SHORTS

1. DOWNSBOROUGH
2. THOMAS, Rod
3. TROLLOPE, John
4. BUTLER, Joe
5. BURROWS, Frank
6. HARLAND, Stan
7. PORTER, Chris
8. GOUGH, Tony
9. HORSFIELD, Arthur
10. NOBLE, Peter
11. RODGERS, Don

BROWN & WHITE

MAIN DEALER

Linesmen :
Mr. G. T. CARTMAN
 Stoke-on-Trent
 (Red Flag)

Mr. S. SWAIN
 Runcorn, Cheshire
 (Yellow Flag)

What Causes Cancer ?
 is a question which only research
 can answer. But research is
 costly. Will you help just a little
 by sending a donation to the

BRITISH EMPIRE
CANCER CAMPAIGN
 11 GROSVENOR CRESCENT
 LONDON S.W.1

GLOOK EXPORT FREIGHT
SERVICES Ltd
Glook Air Services

SHIPPING AGENTS
 AIR FREIGHT AGENTS AND
 EMIGRATING
 55 Cardigan Lane, Leeds, LS4 2LE



TELEPHONE
 59614
 AND
 59721



any alteration to these teams will
 be announced over the loudspeakers.

Sub.....

and
 AMME
 AL

 D.
 57 10E

FOR ALL YOUR TYRE AND BATTERY
 REQUIREMENTS CONSULT YOUR LOCAL
 BRANCH OF

THE WEST RIDING TYRE CO.
 192-194 Pontefract Lane, Leeds 9
 Telephone 39488

 Barnsley Tel. 81888 - Sheffield Tel. 51086
 Dewsbury Tel. 3337 - Hull Tel. 29370
 York Tel. 54411 - Selby Tel. 3245
 Wakefield Tel. 74371 - Bradford Tel. 31141
 Cleckheaton Tel. 4047 - Pontefract Tel. 3980

FOR

AUSTIN
 SALES
 SERVICE and SPARES

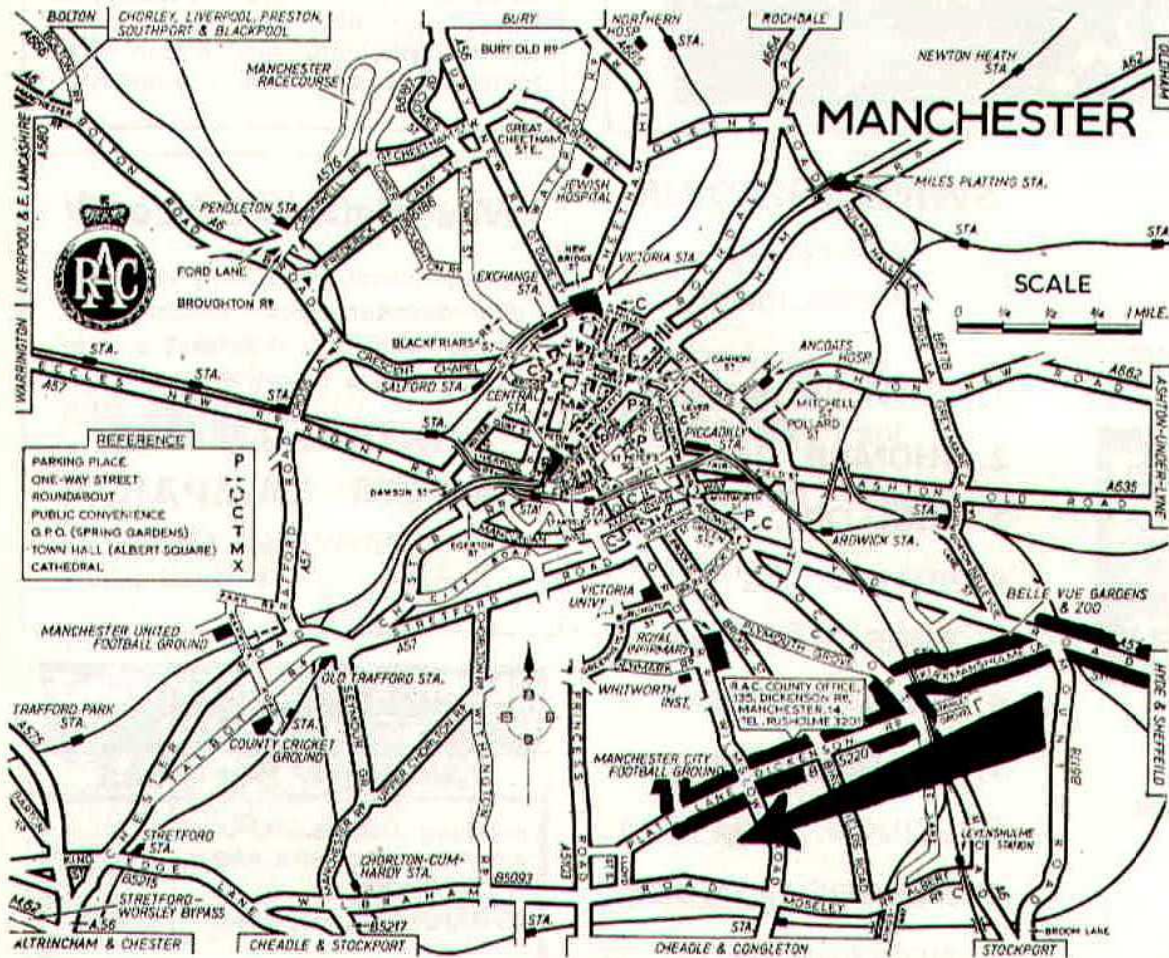
 CONSULT THE DISTRIBUTORS
LOOKERS OF LEEDS
 BURLEY ROAD tel. 39291
 Also at
 EASTERLY ROAD tel. 656431



Modern Art Glass Co Ltd

For all Glass and Glazing
Aluminium Shop Fronts, etc. — Louvre Windows
SWINNOW LANE - BRAMLEY - tel. Pudsey 71611

Here is your R.A.C. Route for the away game with—
MANCHESTER CITY



LEEDS—Leave by A62 Gelderd Road via Birstall to Huddersfield. Continue on the A62 as signed Oldham. 10½ miles on, road junction, bear left A670 via Mossley to Ashton-under-Lyne. Turn right A635 then left A6017 to Denton. A6017/A57 junction. Turn right A57 to—**MANCHESTER** 43 Miles. Enter by Hyde Road then left into Kirkmanshulme Road. Left then right in Stockport Road into Dickenson Road into Platt Lane then right to Manchester City A.F.C. Football Ground in Maine Road.

Tyres FREE

Vehicle Nos. EUB 146D and GYG 684C
have won Four Tyres for the Price of Two.
Owners please contact.

Special terms to all United Supporters at
UNION RUBBER WORKS LTD.
Bridge Street, Morley Tel. 4967/8

FOLLOW YOUR TEAM WITH

WALLACE ARNOLD

EXCURSIONS TO ALL AWAY MATCHES

TELEVISION RENT or BUY

GREENSIDE ELECTRICAL CO LTD

LOWER WORTLEY RD. tel. 639171
QUEEN STREET, MORLEY tel. 3925
ROBOPHONE & RADIO CONTROL VANS
GIVE DAILY TV SERVICE, 365 DAYS A YEAR

TURNSTILES SUPPLIED TO
LEEDS UNITED FOOTBALL CLUB

by

CONVEYORS

(YORKSHIRE) LTD.

7 WEAVER STREET - LEEDS 4
Tel. No. 638731

Elishan Art Services Limited

ELISHAN PRINTING & PUBLISHING LTD.
58 EDGWARE WAY - EDGWARE - Middlesex
Telephones : 01-258-8655/6/7

Every type of printing
Letterpress and Litho
Instant Service
Short term credit
Happy business relationships
Artistic Designs
Nationwide Service

Asquith & White (Radiators) Ltd.

FOR ALL YOUR RADIATOR TROUBLES SAME DAY REPAIR SERVICE
SERVICE EXCHANGE FOR ALL POPULAR TYPES
EXCHANGE BUMPER BARS 1 HOUR NUMBER PLATE SERVICE
3 Lockwood Way, Parkside Lane, Dewsbury Road, Leeds 11
Phone 73849



PAINTING and DECORATING COMPETENT Workmen COMPETITIVE Quotations

FRANK STUBLEY, Albion Street, Leeds 28323

FOR
TIMBER
PLYWOOD
WALLBOARDS
FENCING
and
GARDEN SHEDS

GO TO

HUDSON

and Co. Limited

EAST STREET - LEEDS 9

Hirst Road, Dewsbury Doncaster Road, Wakefield
Also JAMES BATES LTD., Burbeary Rd., Lockwood,
Huddersfield

TRADE & RETAIL - DELIVERED TO ALL PARTS

SELL TO . . .

BRITANNIA METALS

VICKERSDALE - STANNINGLEY - LEEDS
telephone Pudsey 2268

COPPER - RADIATORS - ALUMINIUM
PHOSPHOR BRONZE, Etc.

Saturday, 30th January

MANCHESTER

Special train leaves Leeds 12.05 arriving
Manchester Victoria 13.29, returning at 18.00

Adults 13/-

Child 7/- (under 14)

Tickets only from Leeds

Station Ticket Office



"YORKSHIRE EVENING POST" SCOREBOARD FOR CORRECT HALF-TIME SCORES

| | | | | | |
|--------------------------|-----|-----|----------------------------|-----|-----|
| A Cardiff v. Brentford | ... | ... | L Rochdale v. Colchester | ... | ... |
| B Carlisle v. Tottenham | ... | ... | M Stoke v. Huddersfield | ... | ... |
| C Chelsea v. Man. C. | ... | ... | N West Brom. v. Ipswich | ... | ... |
| D Derby v. Wolves | ... | ... | O York v. Southampton | ... | ... |
| E Everton v. Middlesbro' | ... | ... | P Millwall v. Norwich | ... | ... |
| F Hull v. Blackpool | ... | ... | Q Barnsley v. Wrexham | ... | ... |
| G Leicester v. Torquay | ... | ... | R Bradford C. v. Port Vale | ... | ... |
| H Liverpool v. Swansea | ... | ... | S Gillingham v. Doncaster | ... | ... |
| I Notts. F. v. Orient | ... | ... | T Halifax v. Reading | ... | ... |
| J Oxford v. Watford | ... | ... | U Rotherham v. Aston V. | ... | ... |
| K Portsmouth v. Arsenal | ... | ... | | | |

CAR TYRE CORNER

the tyre service for the discerning motorist
REGENT STREET, LEEDS 2 TEL: LEEDS 30652

CAMERON IRON WORKS LTD.

QUEEN ST., STOURTON, LEEDS 10

are recruiting, skilled:—

- TURRET SETTER OPERATORS
- HORIZONTAL BORERS
- VERTICAL BORERS
- DRILLERS

Cameron's rates and conditions of
employment are "second to none."

Contact:—Personnel Manager
Telephone: Leeds 72911

THE LIFEBOATS NEED
YOUR

HELP!

Send a contribution however
small, to:

ROYAL NATIONAL LIFEBOAT
INSTITUTION

42 Grosvenor Gardens, London, S.W.1



THE NEW SPORTS SHOP IN LEEDS
LAWRENCE & PLATER
SPORTS
17 EASTGATE - LEEDS 1
Telephone 25573

OFFICE CLEANERS - WINDOW CLEANERS
BUILDING CLEANERS - PAINTERS and DECORATORS
LEEDS CLEANING CO. (Bldgs) Ltd
PREMIER HOUSE - VICKERS PLACE
STANNINGLEY - LEEDS
telephone Pudsey 77394

**DAWSON
FOR
BRUSHES**

MANUFACTURERS OF BRUSHES TO INDUSTRY
FOR OVER 100 YEARS
JOHN DAWSON & SON
ELDON BRUSH WORKS
WEST PARK RING ROAD
telephone 0532-59321-2
CLAYTON WOOD RISE
LEEDS LS16 6RH
grams DAWBRUS LEEDS

BOLTONS
FIAT YORKSHIRE
DISTRIBUTORS

WATER LANE, LEEDS II PHONE:38091



Refrigeration for
AGRICULTURE - INDUSTRY - COMMERCE

WHITEHALL REFRIGERATION
(LEEDS) LTD.

3 - 7 BELLE VUE STREET - HEALEY - BATLEY

Telephone : BATLEY 5467



MORLEY
WASTE
TRADERS
LTD.

Buying and Processing
All grades Iron and Steel Scrap
STEEL STOCKHOLDERS

KAYSTAN IRONWORKS
ALBERT ROAD
MORLEY
LEEDS

Telephones :
Morley 4007/8

Merchanting :
Non-Ferrous Metals
CASH BUYERS OF ALL METALS

THE BEST SPORTS EQUIPMENT
comes from . . .

JAMES H FREW LIMITED

THE PRACTICAL SPORTS OUTFITTER
OFFICIAL SUPPLIERS TO LEEDS UNITED
CLUB SCARVES - BOB CAPS - BADGES AND SHIRTS
HAREHILLS CORNER, LEEDS 8 Tel. : 622476

LEEDS UNITED'S FIXTURES 1970-71

| Date | Opponent | G | Result | Date | Opponent | G | Result |
|---------------------|-----------------------|---|--------|----------------------|--------------------------|---|--------|
| AUGUST, 1970 | | | | JANUARY, 1971 | | | |
| Sat 15 | Manchester United | A | 1-0 | Sat 9 | Tottenham Hotspur | H | 1-2 |
| Wed 19 | Tottenham Hotspur | A | 2-0 | Mon 11 | Rotherham United | A | 0-0 |
| Sat 22 | Everton | H | 3-2 | | F.A. Cup 3rd Round | | |
| Wed 26 | West Ham United | H | 3-0 | Sat 16 | West Ham United | A | 3-2 |
| Sat 29 | Burnley | A | 3-0 | Mon 18 | Rotherham United | H | 3-2 |
| SEPTEMBER | | | | | F.A. Cup 3rd Rnd Re-Play | | |
| Tues 1 | Arsenal | A | 0-0 | Sat 23 | Swindon Town | H | |
| Sat 5 | Chelsea | H | 1-0 | | F.A. Cup 4th Round | | |
| Tues 8 | Sheffield U. F.L. Cup | A | 0-1 | Sat 30 | Manchester City | A | |
| Sat 12 | Stoke City | A | 0-3 | FEBRUARY | | | |
| Tues 15 | Sarpsborg (Fairs C.) | A | 1-0 | Sat 6 | Liverpool | H | |
| Sat 19 | Southampton | H | 1-0 | Sat 13 | F.A. Cup 5th Round | | |
| Sat 26 | Nottingham Forest | A | 0-0 | Sat 13 | Ipswich Town | A | |
| Tues 29 | Sarpsborg (Fairs C.) | H | 5-0 | Sat 20 | Wolverhampton W. | H | |
| OCTOBER | | | | Fri 26 | Coventry City | A | |
| Sat 3 | Huddersfield Town | H | 2-0 | Sat 27 | F.L. Cup Final | | |
| Sat 10 | West Bromwich A. | A | 2-2 | MARCH | | | |
| Sat 17 | Manchester United | H | 2-2 | Sat 6 | F.A. Cup 6th Round | | |
| Wed 21 | Dynamo Dresden, F.C. | H | 1-0 | Sat 6 | Derby County | H | |
| Sat 24 | Derby County | A | 2-0 | Sat 13 | Blackpool | A | |
| Sat 31 | Coventry City | H | 2-0 | Sat 20 | Crystal Palace | H | |
| NOVEMBER | | | | Sat 27 | F.A. Cup Semi Final | | |
| Wed 4 | Dynamo Dresden, F.C. | A | 1-2 | Sat 27 | Chelsea | A | |
| Sat 7 | Crystal Palace | A | 1-1 | APRIL | | | |
| Sat 14 | Blackpool | H | 3-1 | Sat 3 | Burnley | H | |
| Wed 18 | Stoke City | H | 4-1 | Sat 10 | Newcastle United | A | |
| Sat 21 | Wolverhampton W. | A | 3-2 | Tues 13 | Huddersfield Town | A | |
| Sat 28 | Manchester City | H | 1-0 | Sat 17 | West Bromwich A. | H | |
| DECEMBER | | | | Sat 24 | Southampton | A | |
| Wed 2 | Sparta Prague F.C. | H | 6-0 | Wed 28 | Arsenal | H | |
| Sat 5 | Liverpool | A | 1-1 | MAY | | | |
| Wed 9 | Sparta Prague F.C. | A | 3-2 | Sat 1 | Nottingham Forest | H | |
| Sat 12 | Ipswich Town | H | 0-0 | Sat 8 | F.A. Cup Final | | |
| Sat 19 | Everton | A | 1-0 | | | | |
| Sat 26 | Newcastle United | H | 3-0 | | | | |

All Saturday and Bank Holiday games kick-off 3.0 p.m. All mid-week games kick-off 7.30 p.m.

Fixtures are the copyright of The Football League Ltd., and are printed by their permission under Licence No. 66. They must not be reproduced in whole or in part without permission from the Football League Ltd



The Best Bitter.

"Brewed in Yorkshire"



Ω
OMEGA
WATCHES

GILLGRASS

37/39 VICAR LANE
LEEDS 1

Telephone 2 6 1 1 0

Please help SPASTICS

BY SENDING A DONATION
TO

National Spastics Society
12 PARK CRESCENT LONDON W.1



GREEN POST

—the Saturday Evening paper which gives you the best reports, views, results, features and pictures from the experts. Get your facts right by reading the **GREEN POST**. Yorkshire's greatest sports paper.

BROOKLANDS MOTOR CO. LTD.

WELLINGTON ROAD - LEEDS - LS12 2TL

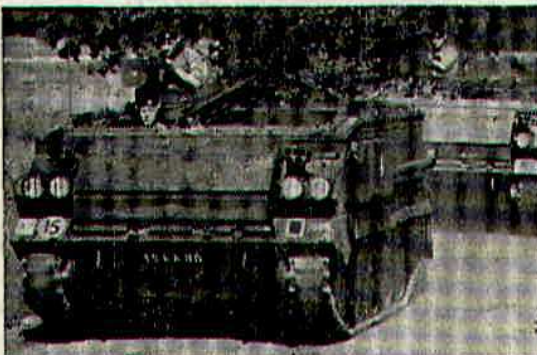
Tel. LEEDS 36412/6

YORKSHIRE DISTRIBUTORS FOR VOLVO

Marshall-Fowler Fan-Fare

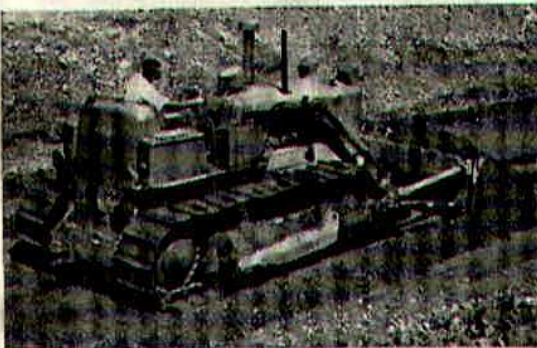
GUARDS ADVANCE ON FOWLER TRACKS

The Army's fast, amphibious armoured personnel carriers (FV 432's) are fitted with track links made at Marshall-Fowler's Sprotborough Foundry. These FV 432's are used by the Coldstream Guards in Germany, and they are capable of carrying ten infantrymen and two crewmen at high speed across difficult country.



FLOODS RETREAT BEFORE A CHALLENGER 33

This 125 b.h.p. crawler tractor, built at Marshall-Fowers of Leeds, is working on flood control at a Jamaican sugar plantation. Fowlers have supplied machinery to the world's sugar estates for over 100 years.



MARSHALL-FOWLER LTD.

John Fowler Works, Leathley Road,
Hunslet, Leeds LS10 3TR.
Tel: Leeds 30731. (10 lines).

FOWLER ENTHUSIAST DOWN UNDER

George C. Hadley of Nambour, Queensland, has built a model Fowler 0-6-0 loco, No. 16207. It runs along a 400' track around his garden. George has made a beautiful and accurate model as the picture shows. Not so surprising, for George is the loco engineer at the Moreton Sugar Mills, where the original Fowler No. 16207 still works. It was delivered in 1925.



EMPLOYMENT AT MARSHALL-FOWLER

Marshall-Fowler is one of Britain's busiest and most progressive engineering firms. Crawler tractors, loaders and pipelayers made at the Leathley Road works are exported all over the world. Full order books mean regular employment — and there are good opportunities NOW for skilled engineering tradesmen of all types. Why not get in touch with the Personnel Manager at Leathley Road, Hunslet, Leeds LS10 3TR.

FAN QUIZ No. 10

1. What was the biggest crowd ever to watch an FA Cup Final?
2. Only three English clubs have won the FA Cup and League Championship in the same season. Names please.
3. Who scored ten goals in a Football League match and which match?
4. How many countries have won the World Cup since 1930?

If you can't agree on the answers write to Fan Quiz No. 10, Marshall-Fowler Ltd., Leeds 10.